

## Instructions of Setting Integration Tool

It is a collection of thermal printer's setting functions, including setting serial port, Ethernet port, language and program update ect. It's powerful and easy to use.

### I. Connect the Printer

Double-click the tool "PrinterTool.exe", and then it'll show as below:

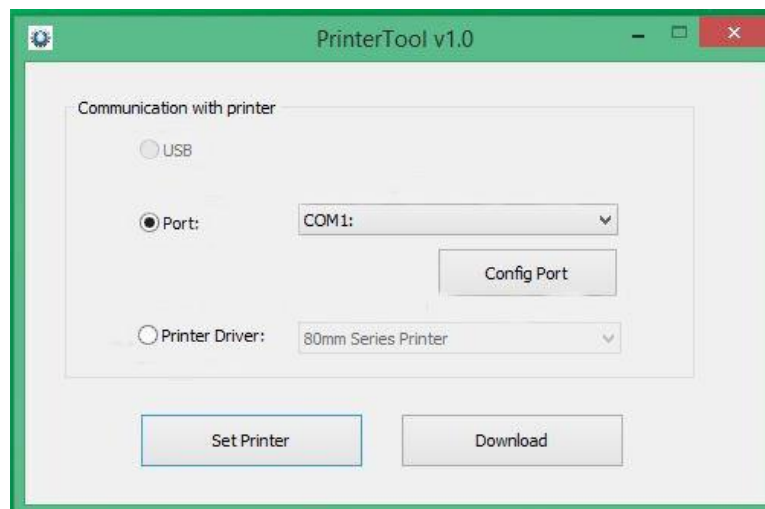


As shown above, there are three ways to connect to the printer.

#### 1. Connect the printer via USB

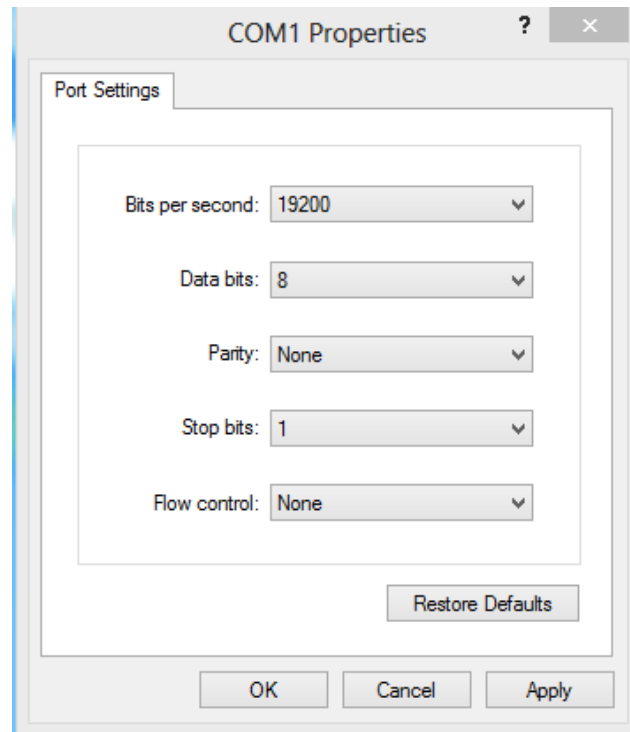
Please click USB option if the printer is connected by USB port. Then you can proceed to "set printer" or "download". (You can click USB option if the printer is connected by USB port. Or the option is gray and can't be chosen. )

#### 2. Connect the printer via port

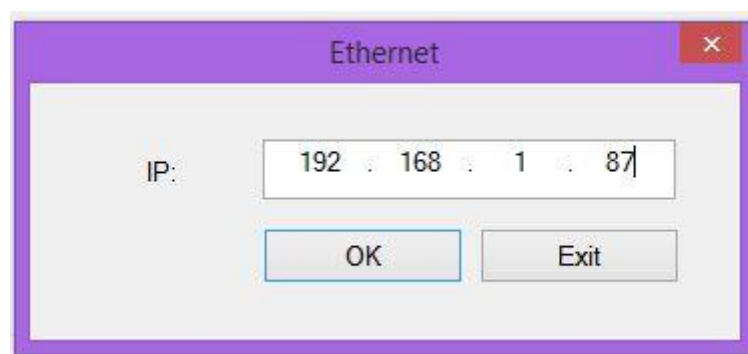


Connect the printer after “Config Port” via serial port, Ethernet port or parallel port, then proceed to “set printer” or “download”.

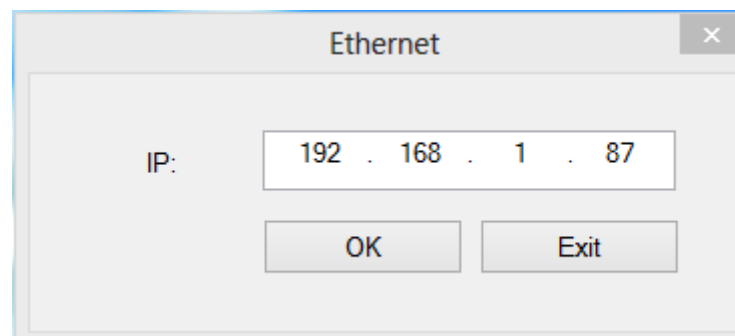
- a. Setup port if choose serial port.



- b. Setup IP if choose Ethernet port, then connect the printer.



- c. Choose parallel



3. Connect printer via common driver (You need to choose and setup corresponding Port of the driver), then proceed to “set printer” or “download”.

### II. “Download” function in the main interface.

Click “download”, then it'll show as below



1. Update program. Click “open files”, select path of corresponding firmware, click “update”, and then update program.
2. It's available to add a picture. Select “logo”, clicks “add”, chooses corresponding path, then add a logo to the printer.



**Note:** In this tool, the logo only supports BMP format images (black and white bitmap, or 32-bit panchromatic bitmap) and other image format does not support.

Supported by the bitmap size has certain requirements, the specific requirements are as follows:

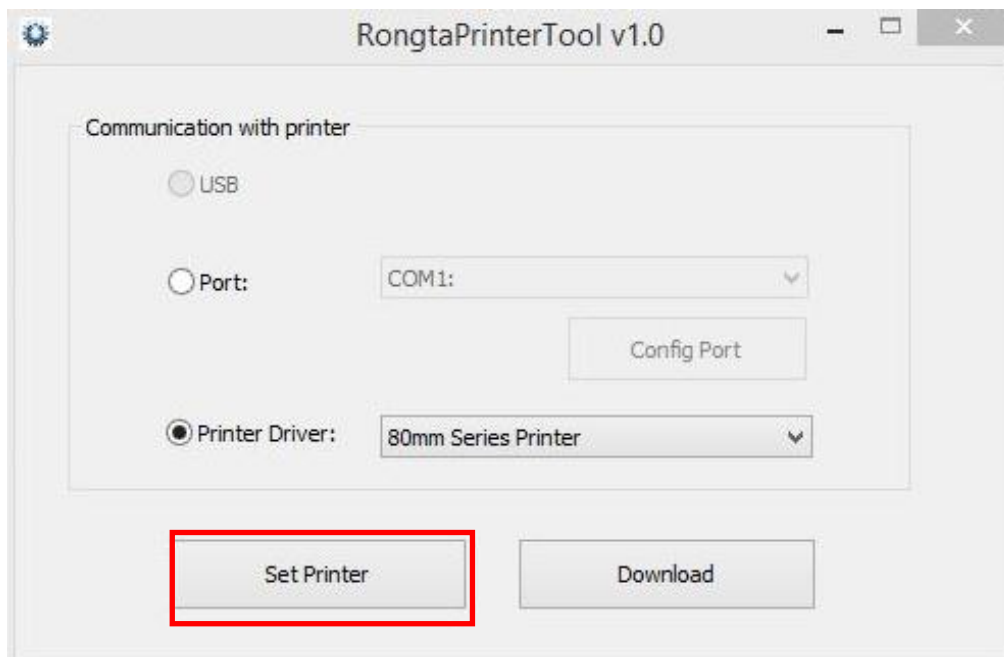
1. Picture size should be less than 64K

2. The width of the picture:

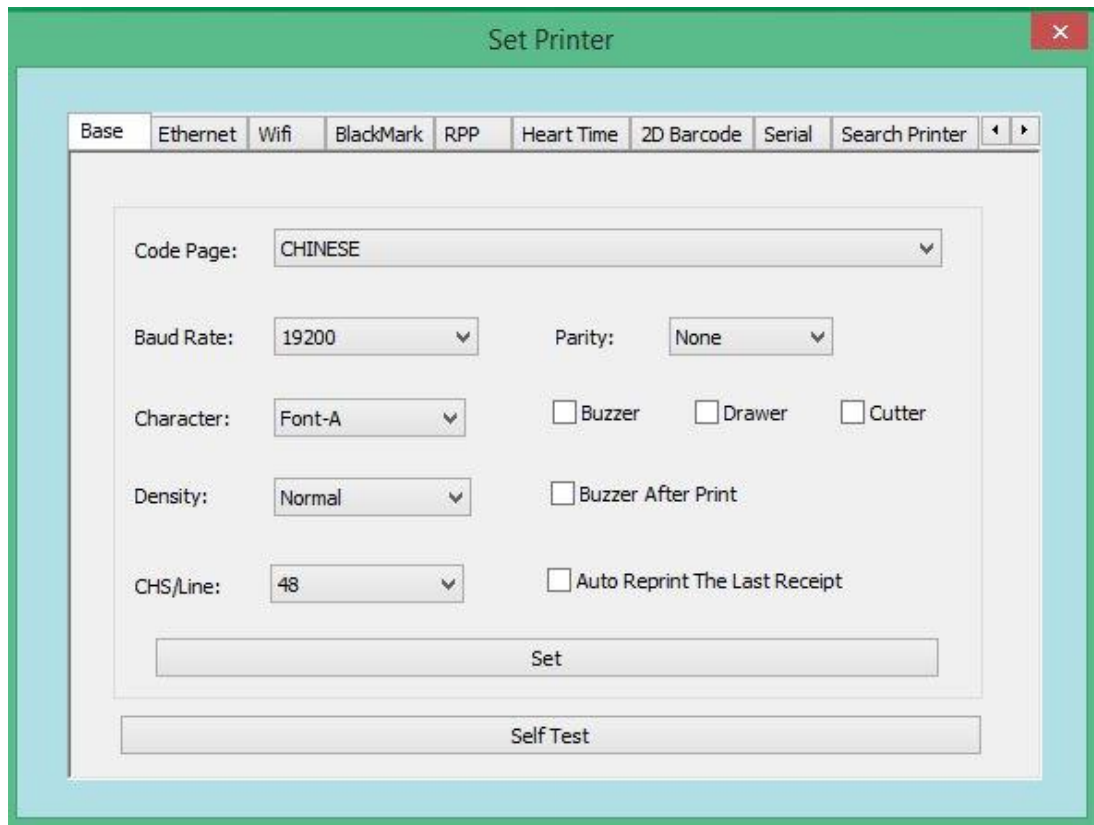
80 the width of the pixel size is less than 567.

58 the width of the pixel size is less than 387.

### III. Main platform “Set Printer” function



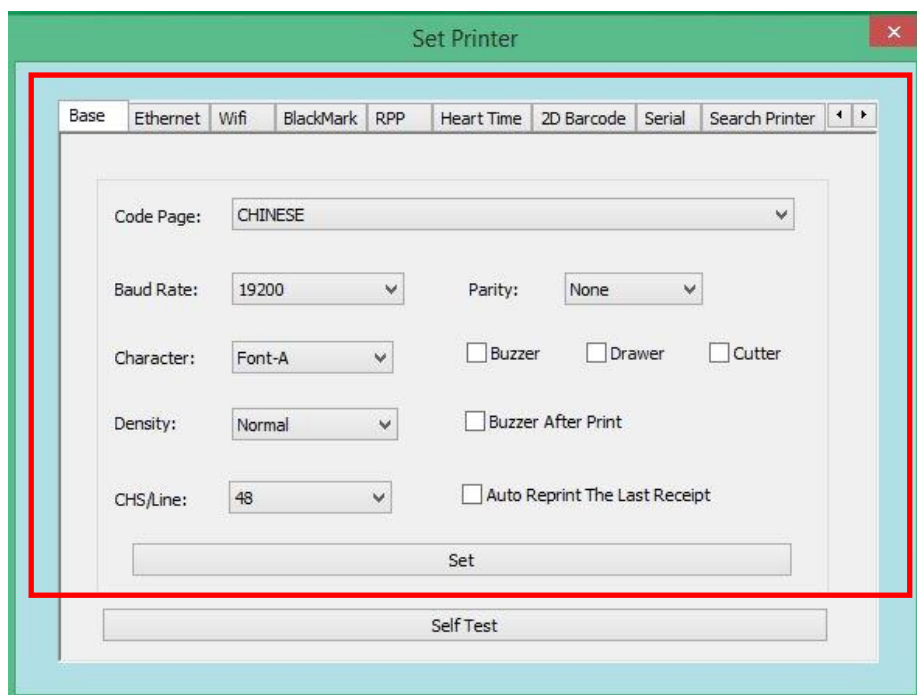
When click the “Set Printer” of the main platform, then it will show as below:



There are 10 platforms.

### 3.1 “Basic setting”

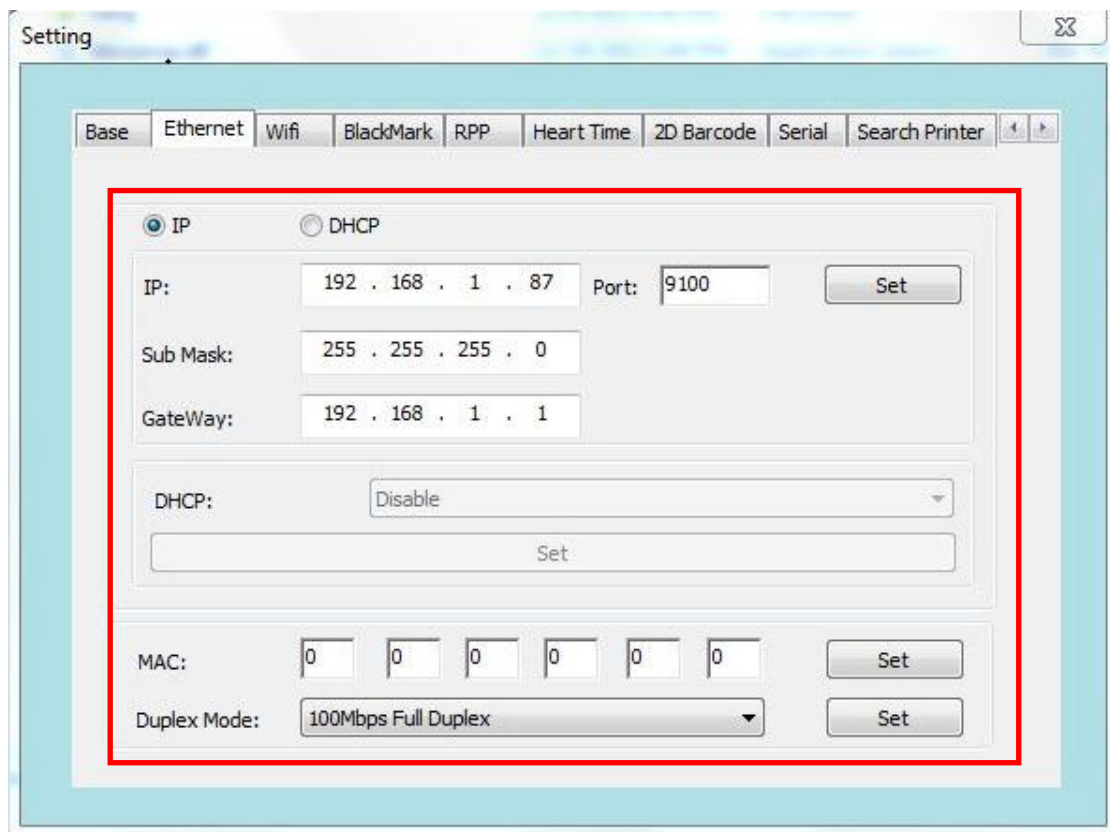
User can set the printer codepage, baud rate, character, density, cash draw and cutter, and precede the update by printing Self Test page.



**Note: if user choose serial interface for printing, the user need to be back to the main platform to reconfigure the baud rate for printing self test page.**

### 3.2 “Ethernet”

1. Set the IP address of the printer, change to "192.168.1.87", and set up the communication port.
2. Set the subnet mask of the printer, change to "255.255.255.0".
3. Set the printer gateway to "192.168.1.1".
4. Set the printer function of DHCP, the DHCP default printer is closed, if you need to open, let the printer automatically obtain an IP address.
5. Set the MAC address, and the network transmission rate of setting.



**Note: If the printer connection is either “Ethernet” or “IP of printer drivers” before setting website, the IP is changed. At that time, the printer and the tool has been disconnected. Resetting IP of the tool is needed for the connection. Other connection ways are unaffected.**

### 3.3 “WIFI”

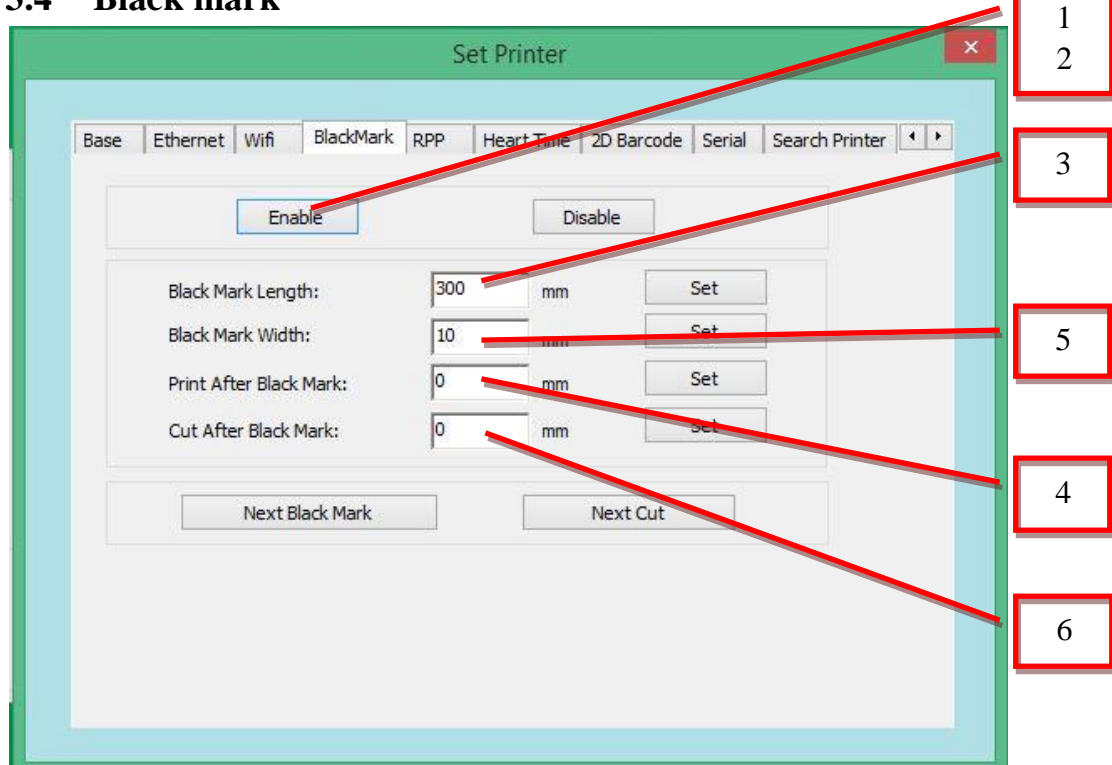
If the printer is equipped with Wifi function, setting Wifi technical parameter is required.

- A. Input the SSID (Wifi name) and the relative pattern.
- B. Input the Wifi encryption type and Wifi PSK key. E.g.: edit the data as following SSID: rdhz, encryption type: WPA-PSK, and input the PSK key. Click “SET”.
- C. After clicking “SET”, the printer will print the set Wifi parameter. Please print self test page to check the parameter with Router’s. If it is correct, please be patient for connection between the printer and Wifi within one minute. If not, repeat the above steps for resetting parameter.

The screenshot shows the 'Set Printer' application window with the 'Wifi' tab selected. The window has a green title bar and a red close button. Inside, there are several tabs: Base, Ethernet, Wifi, BlackMark, RPP, Heart Time, 2D Barcode, Serial, and Search Printer. The 'Wifi' tab is active. It contains the following fields and options:

- SSID:** A text box containing 'rdhz'.
- Mode:** A dropdown menu set to 'STA'.
- Encryption Options:**
  - ☐ OPEN(No Keys)
  - ☒ WPA-PSK/WPA2-PSK
    - Type:** A dropdown menu set to 'WPA-PSK'.
    - Encryption:** A dropdown menu set to 'AES'.
    - PSK Key:** A text box filled with asterisks.
  - ☐ WEP
    - Type:** A dropdown menu set to 'OPEN'.
    - Key:** An empty text box.
- Set:** A large button at the bottom of the configuration area.

### 3.4 “Black mark”



1. Click “Enable” to open black mark, printer will alarm one “di” if successful.
2. After that, please turn off printer, and turn on, only that, you can set black mark parameters.
3. Set printing position, for example, input 10mm, printer will print in 10mm position after black mark. After input, click “set”, printer will alarm one “di” if successful.
4. Set black mark width, longer than real black mark width, if the real is 10mm, you can set 20mm. After input, click “set”, printer don’t alarm if successful.
5. Set black mark length, the distance between two black marks, longer than real black mark length. If the real is 200mm, you can set 400mm. After input, click “set”, printer will alarm one “di” if successful.
6. Set cutting position, for example, input 10mm, printer will cut in 10mm position after black mark. After input, click “set”, printer will alarm one “di” if successful.

## 3.5 “Portable” printer baud rate, density ect.

The 'Set Printer' window displays a configuration interface for a portable printer. It features a tabbed menu at the top with options: Base, Ethernet, Wifi, BlackMark, RPP, Heart Time, 2D Barcode, Serial, and Search Printer. The 'RPP' tab is currently selected. The main area contains several settings:

- Baud Rate:** A dropdown menu set to '9600'.
- Code Page:** A dropdown menu set to 'UNICODE'.
- Density:** A dropdown menu set to 'Low'.
- Font:** A dropdown menu set to 'B-9\*24'.
- CHS/Line:** A dropdown menu set to 'CR(0x0D)'.
- Idle Time:** A text input field with '50' and a unit 'S'.
- Off Time:** A text input field with '0' and a unit 'S'.
- Max Feed:** A text input field with '200' and a unit 'mm'.
- Page Len:** A text input field with '200' and a unit 'mm'.

Below these settings are three sections, each with a 'Set' button:

- Device Name:** Text input field containing 'RPP200'.
- Pin:** Text input field containing '0000'.
- Model Name:** Text input field containing 'RPP200'.
- Serial:** Text input field containing '1111'.

## 3.6 Mechanism heating time

Input the heating time what you need, and then click “set”. After setting, printing out the self test page, to check if the heating time is the same to the time you set.

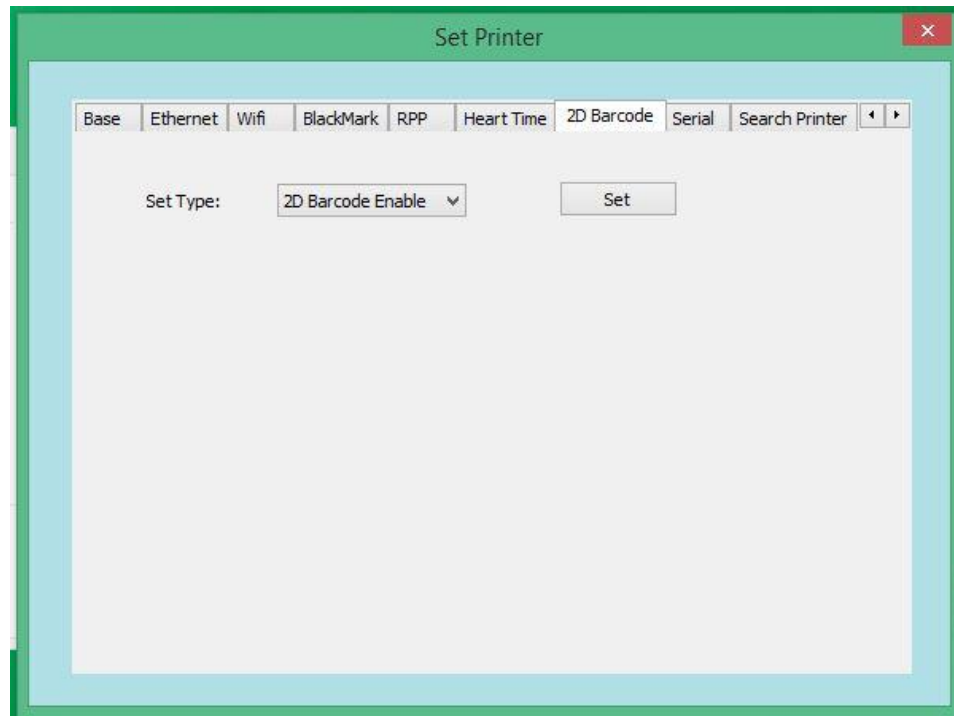
The 'Set Printer' window is shown with the 'Heart Time' tab selected. The main area displays a single setting:

- Heat Time:** A text input field with '300' and a unit 'us'.

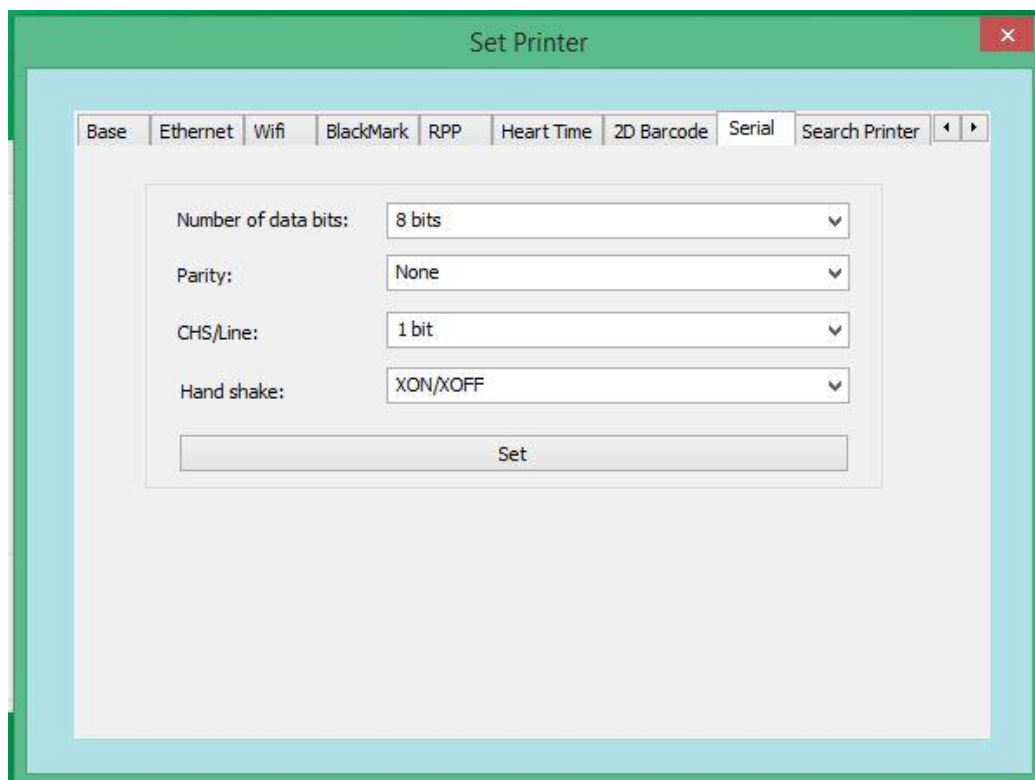
A 'Set' button is located to the right of the input field.

## 3.7 “QR CODE”

This is a function which can set “allow not allow printing our QR code”, after setting, printing out the self test page to check if the printer can print out the QR code.



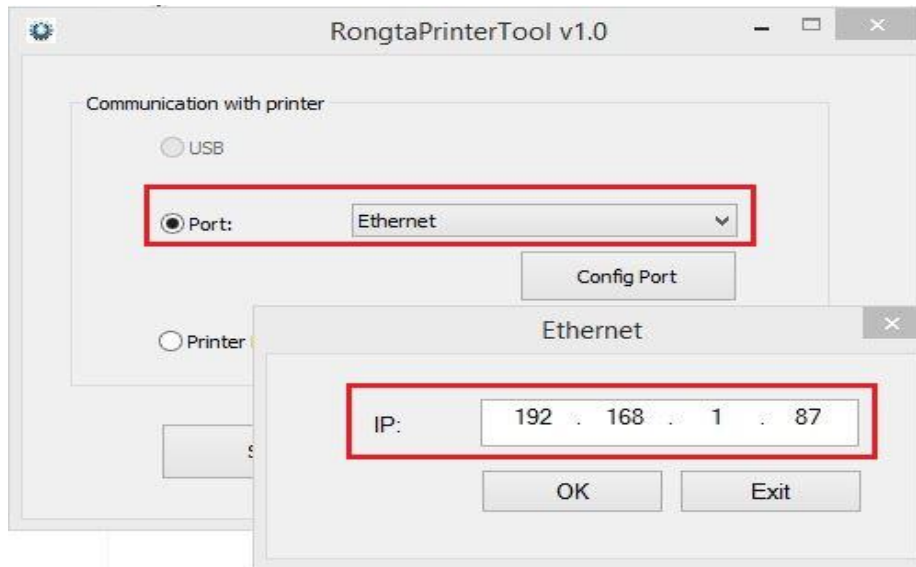
## 3.8 “Serial port settings”



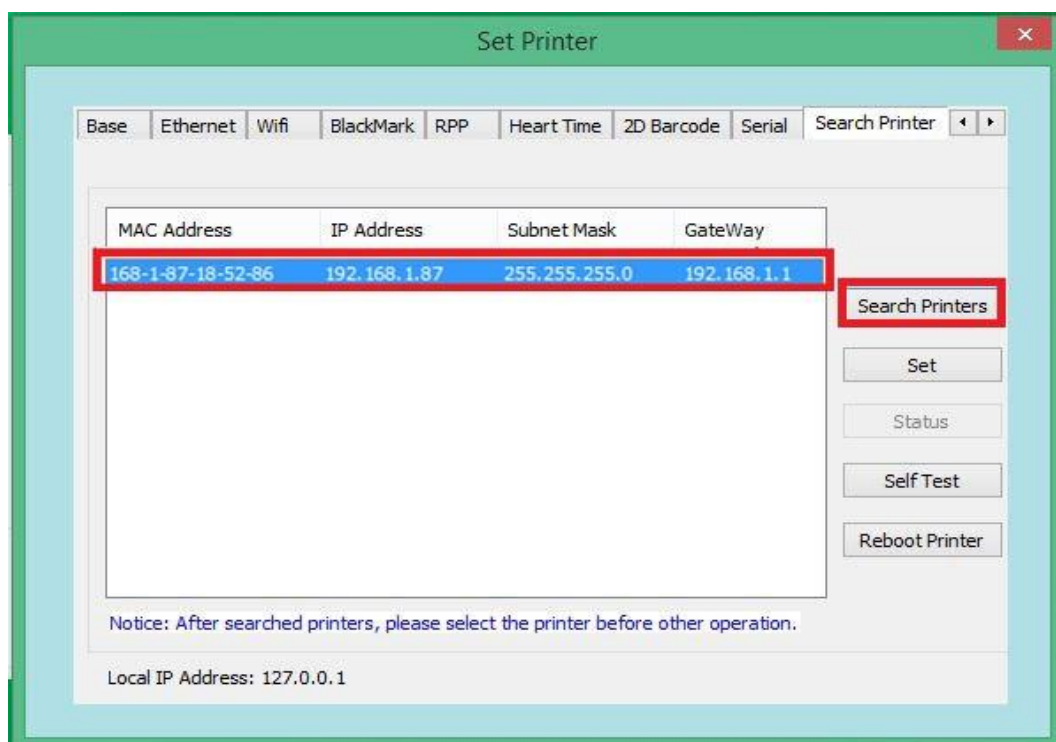
**Notice:** After serial port setting, the parameter is changed. You need to go back to main page to reset the parameter.

### 3.9 Search Printer

a. Connected internet cable, select network port, set IP addresses corresponding.



Select “search printer” success find the printer, will show MAC address, IP address corresponding, select printer, and then execute related configuration or operation.



**3.10 BIG5 (only used for Traditional Chinese language printing at Taiwan)**

The image shows a software window titled "Set Printer" with a green title bar and a red close button. Inside the window, there is a tabbed interface with tabs for "Ethernet", "Wifi", "BlackMark", "RPP", "Heart Time", "2D Barcode", "Serial", "Search Printer", and "BIG5". The "BIG5" tab is currently selected. Below the tabs, there are six rows of configuration options, each with a label, a dropdown menu, and a "Set" button. The options are: "Emulation Mode" set to "EPSON ESC/POS", "Language" set to "Chinese GB18030", "Speed" set to "160mm/s", "Barcode Wide" set to "1:3 (New)", "Paper Width" set to "80mm", and "Auto Reprint Mode" set to "ON".

Label	Value	Action
Emulation Mode:	EPSON ESC/POS	Set
Language:	Chinese GB18030	Set
Speed:	160mm/s	Set
Barcode Wide:	1:3 (New)	Set
Paper Width:	80mm	Set
Auto Reprint Mode:	ON	Set